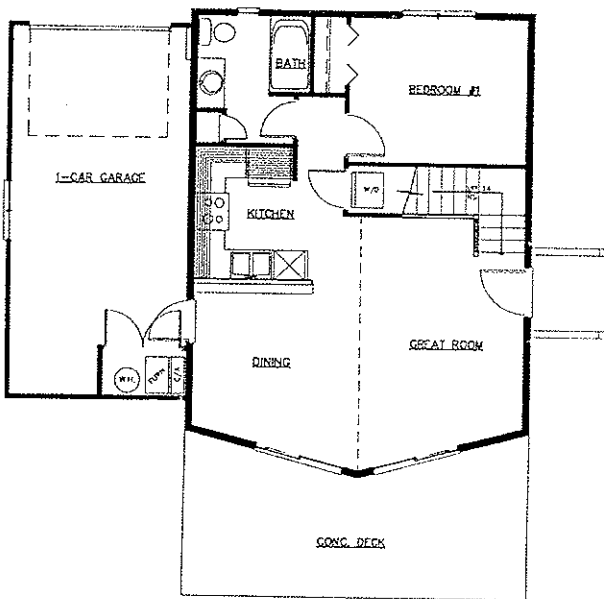
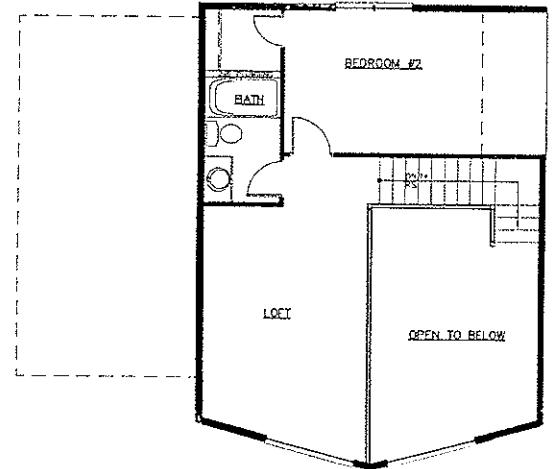
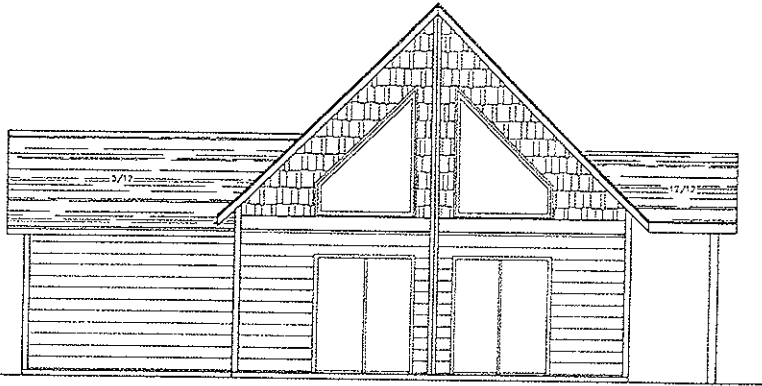


Hayward's Bay Vacation Cabin

290 - 240th Ave

Cabin #33

\$169,900



- Access to all Bridges Bay amenities
- Attached 12' x 25' garage
- 2 Bedrooms, 2 baths, large sleeping loft
- Sleeps 12 - 14
- Main floor laundry
- Lots of windows
- Vaulted ceilings
- Large rear deck
- Huge yard and green space

Living Room	14'10" x 16'10"
Dining Room	10' x 11'
Kitchen	9' x 9'
Master Bedroom	9'6" x 12"
Bedroom 2	9'6" x 12'9"
Sleeping Loft	11' x 14'
Square Feet:	Main = 679
	Loft = 413
	Total = 1,092

Appliances Included:	
Dishwasher, Garbage Disposal	
Construction Allowances:	
Cabinets	\$3,000
Counter Tops	\$700
Floor Coverings	\$4,509
Light Fixtures included	
Plumbing Fixtures included	

Contact Jon E. Broek 605-366-0084

Jon.equityhomes@midconetwork.com